



FEATURES

Solid brass construction - **LEAD FREE**
 Single volume and temperature lever control
 Aerated water flow
 Press pop-up drain with overflow # ABD00699
 Ceramic cartridge # abca07797
 3/8" connection
 16" stainless steel braided supply hose

FINISHES

Standard
 polished chrome (pc)
 brushed nickel (bn)
 Custom
 19 custom finishes available
 (ask your local Aquabress authorized dealer for details)

WARRANTY

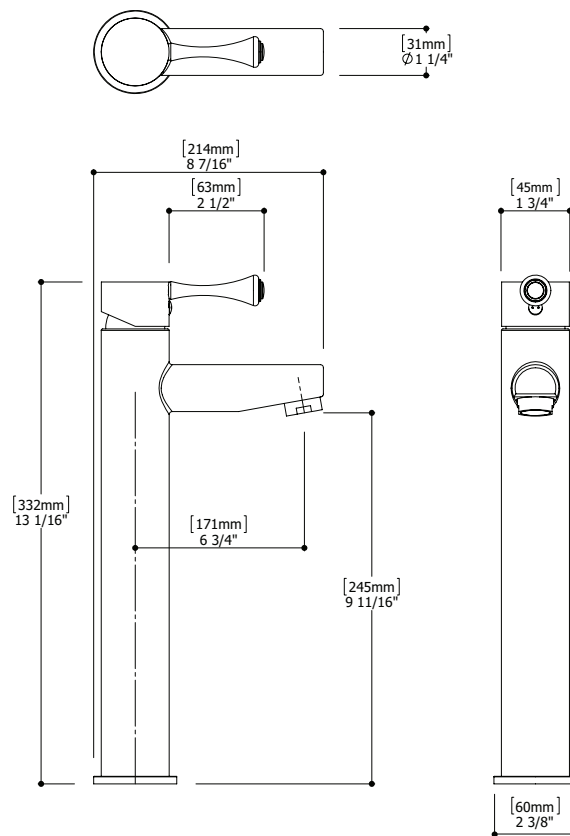
Residential: Limited lifetime warranty to original purchaser
 Commercial: Two years warranty
 (Complete warranty available at www.aquabress.com/warranty)

CODE & COMPLIANCE

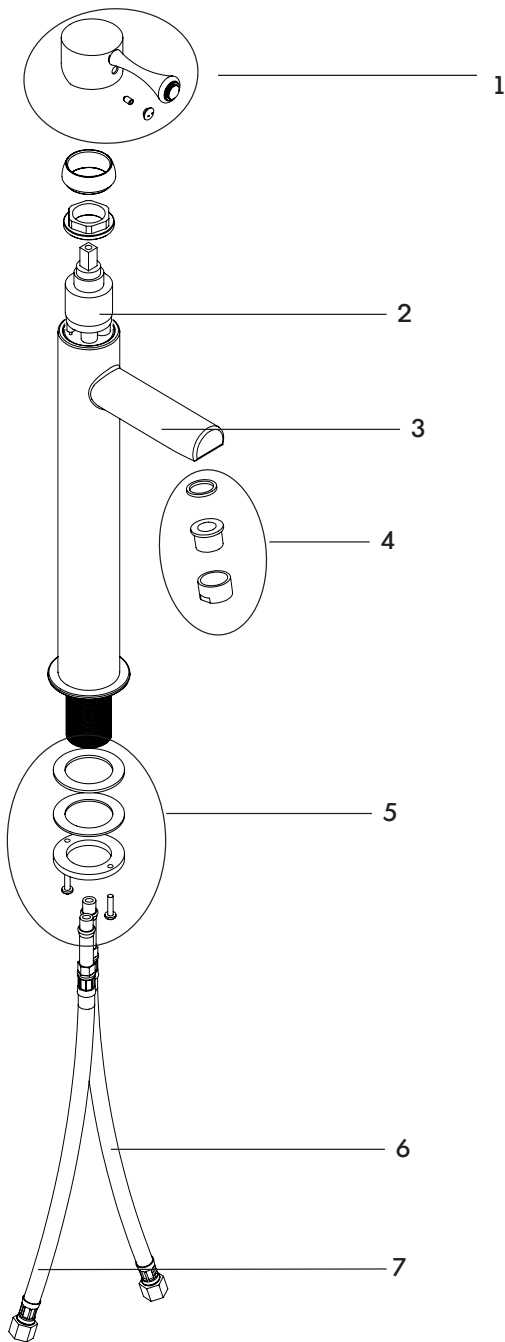
AB1953

SPECS AT LARGE

Overall spout projection: 8 7/16"	Flow rate: 1.5 gpm
CC spout projection: 6 3/4"	Mounting hole: 1 3/8"
Total faucet height: 13 1/16"	Counter depth: 1 3/8"



EXPLOSION PARTS



Item	Code	Description
1	ABFC73273	Handle Kit
2	ABCA04075	35mm cartridge
3	ABFC61088	Faucet body
4	ABAE14007	Aerator kit

Item	Code	Description
5	ABFP09172	Retainer kit
6	ABFH09227	Cold water hose
7	ABFH09224	Hot water hose